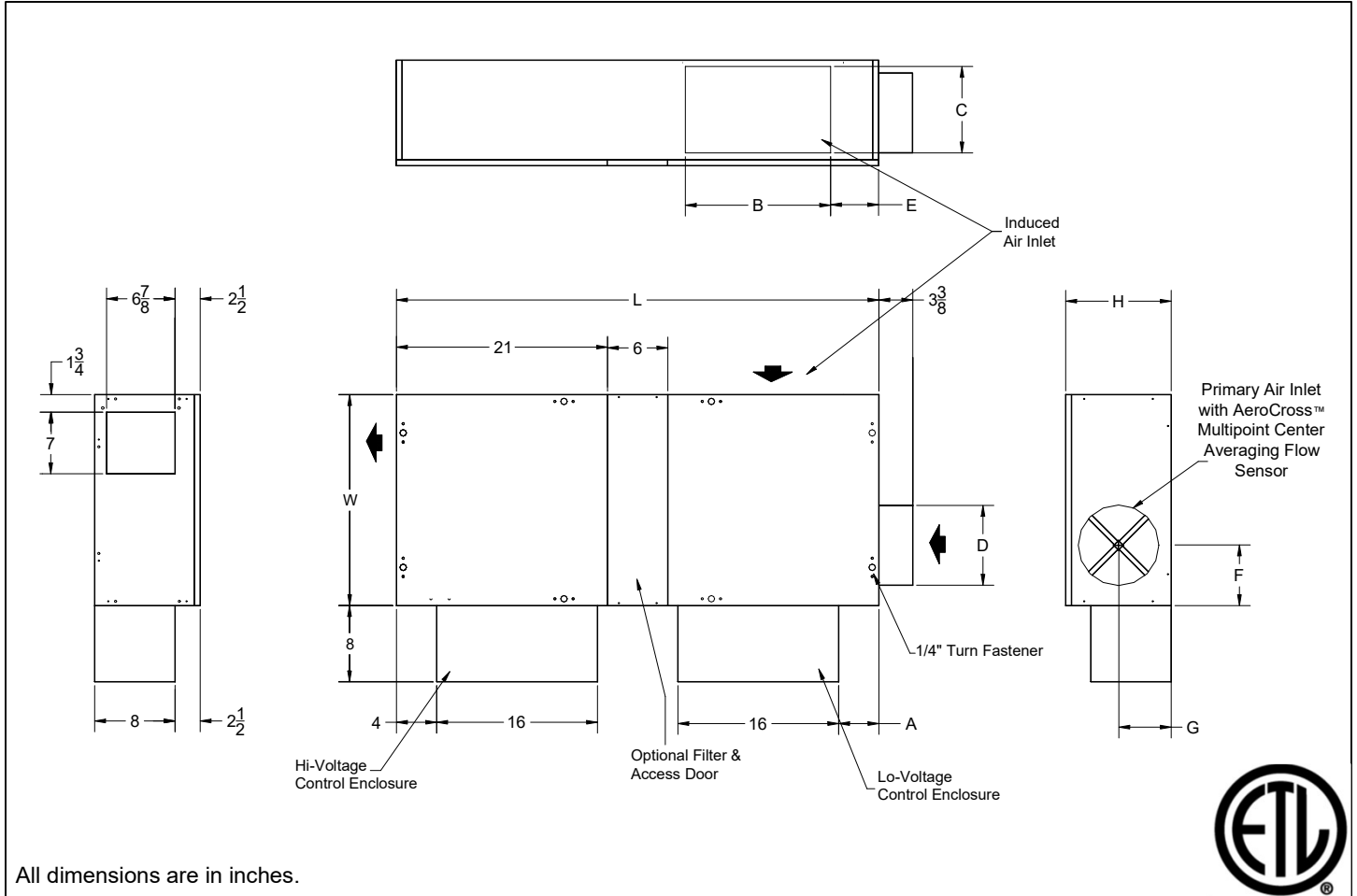


ALHK

Fan Powered Terminal, Series Flow
 Analog Control, Pressure Independent, Access Floor Profile



All dimensions are in inches.

Unit Size	Inlet Size	A	B	C	D	E	F	G	H	L	W	Filter Size
3	9" Diameter	5	14	8	8 7/8	3 1/2	5 5/8	7	10 1/2	48	21	18 x 10
4	9" Diameter	5	14	12	8 7/8	3	5 5/8	7	14 1/8	48	21	18 x 14
	10" Diameter				9 7/8		6 5/8					

Motor Amperage Ratings

Unit Size	Motor hp	120/1/60 FLA	208/240/1/60 FLA	277/1/60 FLA
3	1/4	4.3	1.7	1.4
4	1/3	7.4	3.0	2.6

FLA = Full Load Amperage, as tested in accordance with UL 1995

All fan motors are single phase, same voltage as electric coil (when supplied), with exception that 277 V motors are used with 480V, 3 phase coils (4 wire wye).

Accessories (Optional)

Check if provided.

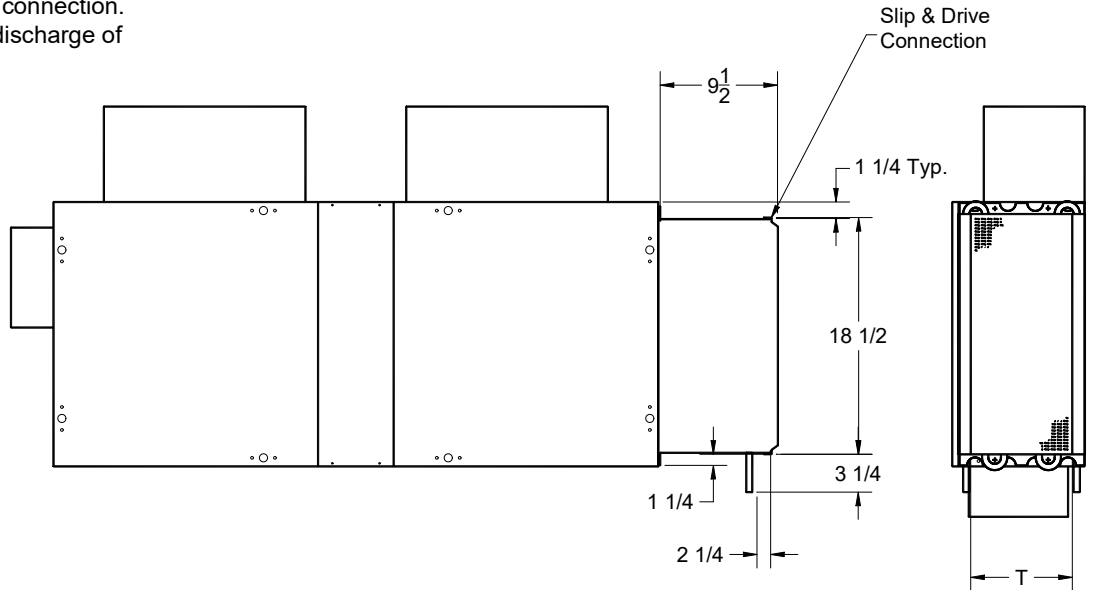
- Induced Air Filter, 1" thick, disposable construction type.
- Toggle disconnect switch (not available on units with optional electric coils.)
- Fibre Free Liner
- 1/2" Fibre Free Liner
- 1/2" EcoShield Liner
- Foil Face Liner
- Fan unit fusing
- _____

Accessories (Optional)

- Hot Water Coil Section
- 1/2" copper tubes
 - Aluminum ripple fins, 10 per inch
 - Connections: Male solder, 1/2" for 1-row and 7/8" for 2-row. Left or right hand connections.
 - Galvanized steel casing
 - Slip and drive duct connection.
 - Coil is installed at discharge of unit.

- 1 Row
 2 Row

Unit Size	T
3	10
4	10



- Electric Coil Section

Standard Features

- Automatic reset thermal cutouts, one per element
- Single point electrical connection for entire unit
- Positive pressure flow switch
- Transformer

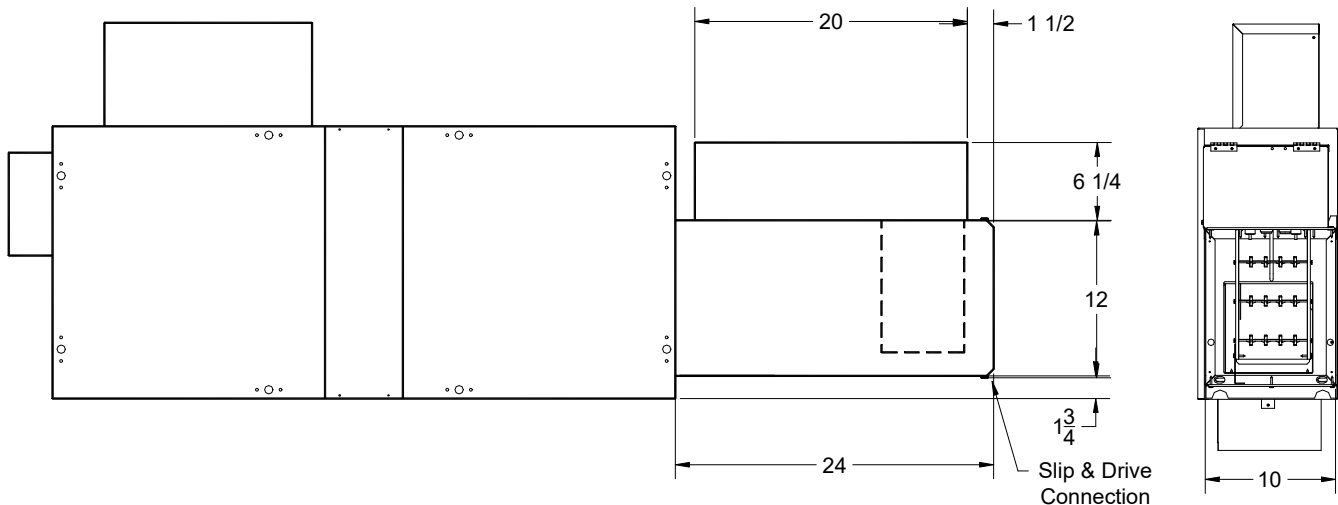
Options

- Fuse Block
- Disconnect switch, door interlock type
- Manual reset cutout
- Dust tight construction

Supply Voltage

- 208V, 1 ph, 60Hz
- 240V, 1 ph, 60Hz
- 277V, 1 ph, 60Hz
- 208V, 3 ph, 60Hz
- 480V, 3 ph, 60Hz *

*4 wire wye only



General Description

- The LHK fan powered terminal is designed to be installed in the underfloor plenum of an access floor grid system.
- 20 gauge steel casing,.
- Dual density insulation, coated to prevent air erosion, meet requirements of NFPA 90A and UL 181.
- Adjustable SCR fan speed control with minimum voltage stop.
- Multipoint, center averaging velocity sensor.
- Top access panels can be removed for service of damper, blower, or filter sections.
- Energy efficient fan motor, permanent split capacitor type, mounted in vibration isolators.
- Primary air flow balancing connections.
- Pressure independent primary flow control.
- Single point electrical connections.
- Rectangular discharge opening is designed for flanged duct connection and slip & drive duct connections for hot water coils.
- Electronic proportional room thermostat with adjustable setpoints for temperature and airflow is included with unit.
- Minimum and maximum airflow adjustments are made at the thermostat, using a digital voltmeter.

This submittal is meant to demonstrate general dimensions of this product. The drawings are not meant to detail every aspect of the product. Drawings are not to scale. Titus reserves the right to make changes without written notice.